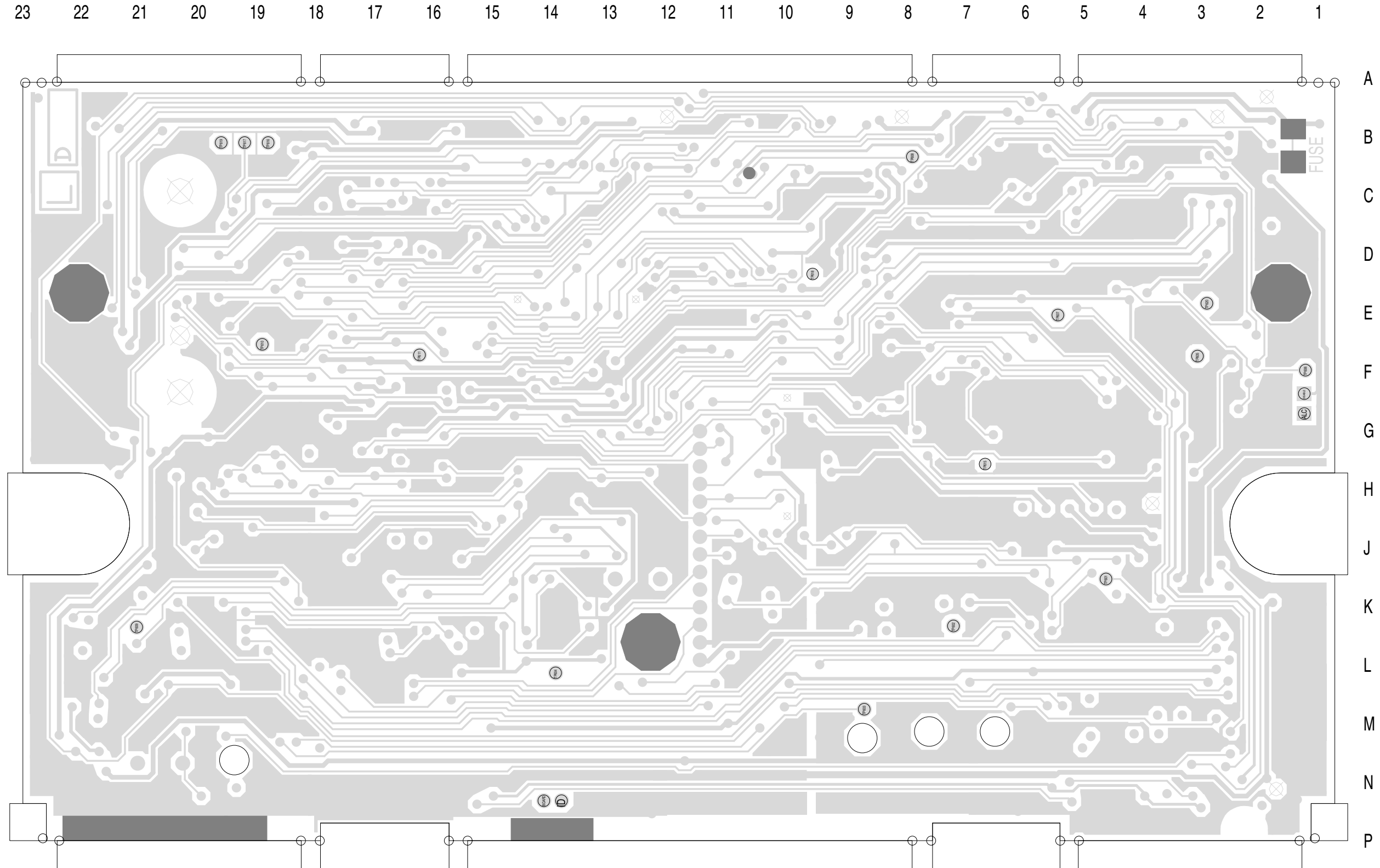


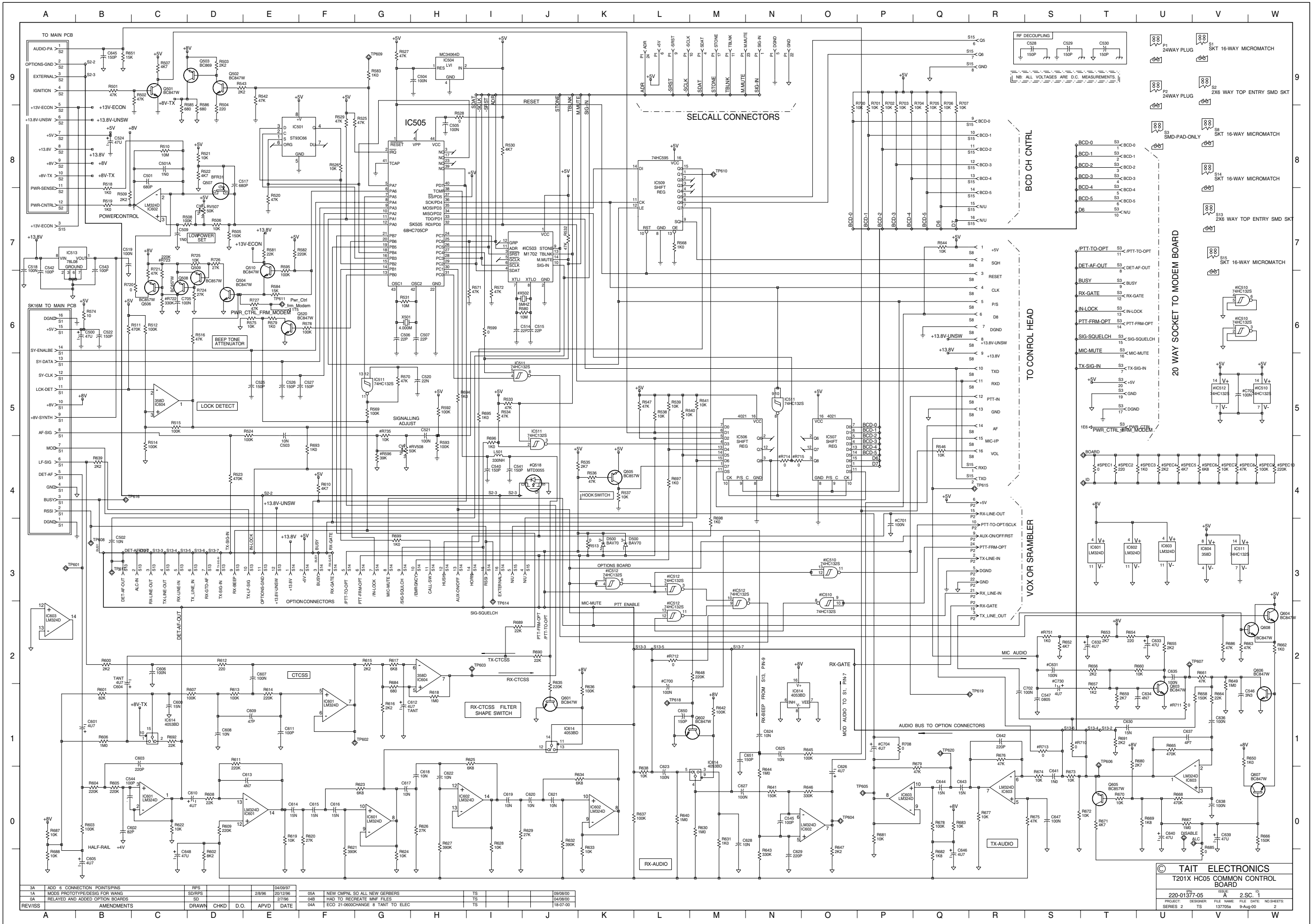
TAIT ELECTRONICS IPN: 220-01377-05 ISS: A ID: 1.TA DATE: 9 Aug 2000  
T2010/15 PCB LAYOUT - TOP SIDE

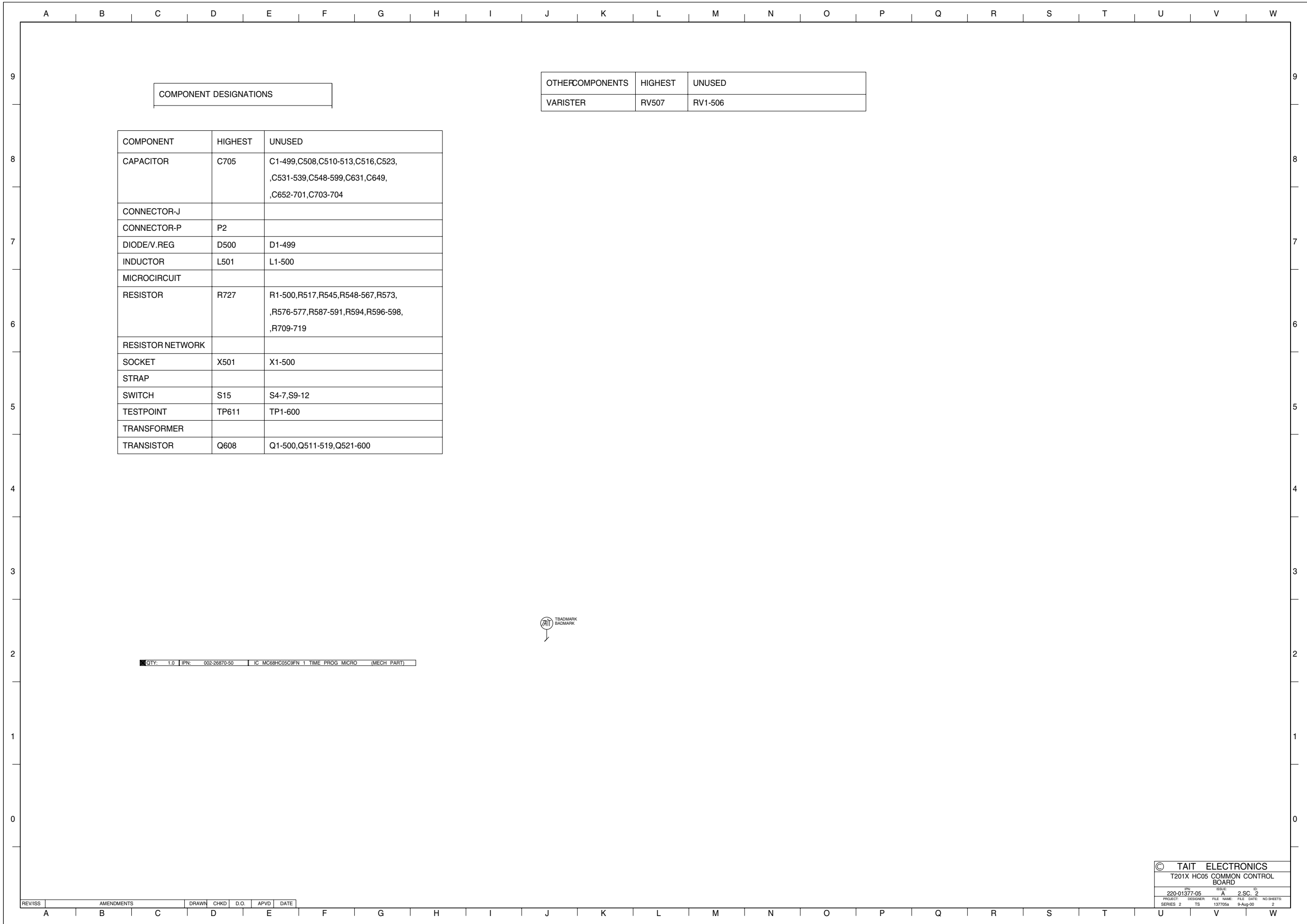
Scale: 2.3:1 ; Rotation: 270 degrees



TAIT ELECTRONICS	IPN: 220-01377-05	ISS: A	ID: 2.BA	DATE: 9 Aug 2000
T2010/15 PCB LAYOUT - BOTTOM SIDE				

Scale:2.3:1 ; Rotation: 90 degrees





COMPONENT DESIGNATIONS

COMPONENT	HIGHEST	UNUSED
CAPACITOR	C705	C1-499,C508,C510-513,C516,C523, ,C531-539,C548-599,C631,C649, ,C652-701,C703-704
CONNECTOR-J		
CONNECTOR-P	P2	
DIODE/V.REG	D500	D1-499
INDUCTOR	L501	L1-500
MICROCIRCUIT		
RESISTOR	R727	R1-500,R517,R545,R548-567,R573, ,R576-577,R587-591,R594,R596-598, ,R709-719
RESISTOR NETWORK		
SOCKET	X501	X1-500
STRAP		
SWITCH	S15	S4-7,S9-12
TESTPOINT	TP611	TP1-600
TRANSFORMER		
TRANSISTOR	Q608	Q1-500,Q511-519,Q521-600

OTHERCOMPONENTS	HIGHEST	UNUSED
VARISTER	RV507	RV1-506

QTY: 1.0 IPN: 002-26870-50 IC MC68HC05C9FN 1 TIME PROG MICRO (MECH PART)



© TAIT ELECTRONICS	
T201X HC05 COMMON CONTROL BOARD	
IPN: 220-01377-05	ISSUE: A 2 SC 2
PROJECT: TS	DESIGNER: FILE NAME: 137705a FILE DATE: 9-Aug-00 NO SHEETS: 2

REV/ISS	AMENDMENTS	DRAWN	CHKD	D.O.	APVD	DATE
A						